

# D6

## TRACK-TYPE TRACTOR



---

**Net Power (2,200 rpm)**

ISO 9249/SAE J1349

ISO 9249/SAE J1349 (DIN)

161 kW (215 hp)

219 mhp

**Operating Weight Ranges**

VPAT

Push Arm

22 275-23 547 kg (49,108-51,912 lb)

22 130-23 911 kg (48,788-52,715 lb)

Cat® C9.3B Engine meets U.S. EPA Tier 4 Final/EU Stage V/Korea Tier 4 Final emission standards with an aftertreatment system that is designed to be transparent to the operator.



The **Cat D6** dozer helps you move material at a lower cost with a fully automatic transmission, outstanding fuel efficiency and reduced service/maintenance costs. The D6 is legendary versatility you have come to trust, with added performance and efficiency to help you take your business to the next level.

# THE CAT<sup>®</sup> D6

RENOWNED PERFORMANCE,  
LOWER OPERATING COST



## PUSHING YOUR PROFITABILITY FORWARD

Whether your work demands maximum productivity, or the lowest operating cost to move material, the fully redesigned Cat D6 dozer is the right machine for the job.

- + DESIGNED TO SAVE YOU FUEL, CUT YOUR SERVICE/MAINTENANCE COSTS AND HELP YOU REACH YOUR JOB SITE SAFETY GOALS
- + MAXIMIZE VERSATILITY WITH OPTIMIZED UNDERCARRIAGE AND BLADE CONFIGURATIONS THAT DELIVER BETTER BALANCE FOR GRADING, CAPACITY TO MOVE MORE MATERIAL AND LOW GROUND PRESSURE
- + AN UNPRECEDENTED CHOICE OF TECHNOLOGY FEATURES WORK TOGETHER SEAMLESSLY TO HELP MAKE YOUR JOB EASIER



## NO NEED TO SHIFT

JUST SET YOUR GROUND SPEED AND GO.



- + No need to upshift/downshift
- + Fully automatic 4-speed transmission with lock-up clutch torque divider
- + Continuously selects the most productive, efficient gear and engine speed for the job

*All comparisons to 2014-2016 3-speed D6T (U.S. EPA Tier 4 Final/EU Stage IV).  
Maintenance comparisons to D6T over initial 10,000 hours of operation.*

---

## UP TO 9% LOWER MAINTENANCE COST

Designed specifically to reduce your service and maintenance costs with updated components, longer service intervals and fewer scheduled maintenance tasks.

---

## UP TO 20% MORE FUEL EFFICIENT

Fully automatic 4-speed transmission continuously adjusts for maximum efficiency and power to the ground without added operator input.

---

## UP TO 50% MORE PRODUCTIVITY WITH CAT TECHNOLOGY

A broad range of Grade technology choices and new operator assist features help boost productivity so you get the most from your machine. Remote Flash and Remote Troubleshoot help improve jobsite efficiency by saving you time.

# RENOWNED PERFORMANCE **LOWER OPERATING COST**

When you need to move material at a lower cost, let the D6 handle some of the details for you. Get the power the job demands, along with the fuel savings you want, all with less operator effort.



---

## **AUTOMATICALLY EFFICIENT**

Don't worry about changing gears. A smooth-shifting, fully automatic 4-speed transmission with lock-up clutch automatically optimizes based on load for greatest productivity and fuel efficiency.

---

## **USE LESS FUEL**

The D6 saves you fuel by continuously adjusting to give you maximum efficiency without losing power to the ground. Cash in on up to 20% better fuel efficiency compared to the 3-speed D6T.

---

## **EASY ON OPERATORS**

To get the most from your dozer, just set the ground speed and go. This means less effort for experienced operators and faster proficiency for newer operators.

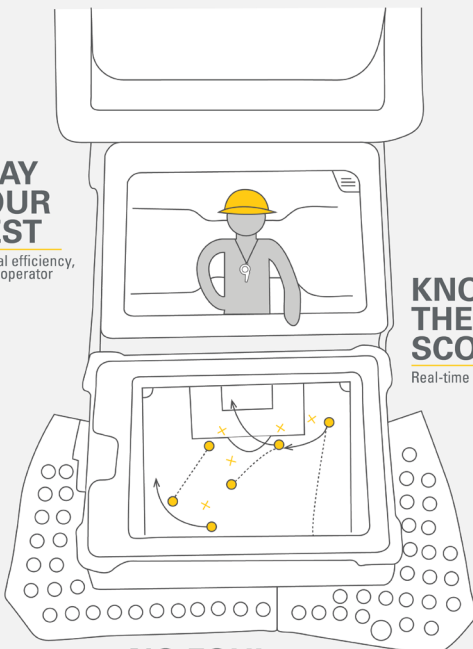


OUTPACE THE COMPETITION  
**WORK SMARTER. WORK SAFER.**

CAT® TECHNOLOGY IS LIKE HAVING A  
**COACH IN THE CAB**

**PLAY YOUR BEST**

Optimal efficiency,  
 fewer operator  
 inputs



**KNOW THE SCORE**

Real-time Feedback

**NO FOUL**

Save rework, time, materials

An unprecedented selection of technology choices help you make the most of your equipment investment.

- + Grade technologies help operators of varied skill levels hit target grade faster and more accurately.
- + New operator assist features work together behind the scenes to help make machine operation easier.
- + Cab offers optimal interior mounting locations that make it simple to install the grade control system of your choice.
- + Link technologies, remote services and tools like the Cat App help connect you to your equipment to help save time and money on service and maintenance.
- + Machine Security System gives you the option to unlock your dozer using a display Passcode or Bluetooth® key.
- + Cat Command for Dozing offers remote control operation for enhanced safety and greater productivity.

CAT GRADE TECHNOLOGY

# BOOST YOUR PRODUCTIVITY

## FIRST PASS TO FINISH GRADE

Factory integrated Cat Grade with 3D uses a GPS signal to automatically adjust blade movements – both lift and tilt – as you follow the design. Save time, labor and materials on all phases of the job. The friendly 10-inch (254 mm) touchscreen grade display works like a smart phone, so it is easy for operators to pick up quickly. Antennas are integrated into the cab roof for even better protection.



## NO GPS SIGNAL? NO PROBLEM

Cat Grade with Slope Assist automatically maintains operator's pre-established blade position without a GPS signal. Put it to work building pads, creating simple design plans on-the-go or working where GPS is unavailable. Slope Assist works seamlessly alongside 3D GPS systems.

## READY WHEN YOU ARE

With Attachment Ready Option (ARO), your dozer comes from the factory ready for simple installation of a grade control system. You will also find a mounting location and connections in the cab to make it easier to utilize your technology systems. ARO with Assist bundles the grade-ready option with features that work in the background to help operators get more done in less time.

# READY TO HELP

## OPERATOR ASSIST FEATURES



### SMOOTH OPERATOR

---

Stable Blade has been improved to make it even easier to get smoother surfaces faster when operating manually. Works seamlessly with operator blade inputs to help reduce imperfections and produce a smoother surface.

### MAKE THE MOST OF EVERY PASS

---

AutoCarry automates blade lift to help you get more consistent blade loads with each pass and reduce track slip. Works seamlessly with Grade with 3D but can now also be utilized when the dozer is not running in automatics.

### OPTIMAL BLADE LOADS

---

Blade Load Monitor gives you real-time feedback on current load versus the optimal blade load based on your ground conditions. Actively monitors machine load and track slip to help you reach optimal pushing capacity.

### KEEP PUSHING FORWARD

---

Save time, effort, fuel and track wear. If high track slip is detected, Traction Control temporarily reduces track power so the operator can adjust blade load and limit the track slip.

# COME ON IN AND MAKE YOURSELF COMFORTABLE

Step into a spacious cab that resets the industry standard for operator comfort, visibility and ease of operation. Integrated Rollover Protective Structure (ROPS) leaves plenty of glass area for all-around visibility. Cleaner sight lines along the hood give you an excellent view to the blade.



## STAY IN TOUCH

10-inch (254 mm) touchscreen main display is easy to use, with a great view of machine settings and features. The standard high-definition rearview camera shows prominently in the display and includes backup lines to guide you.

## WORK SPACE

A wider air-suspension seat gives you plenty of adjustments. Enjoy more storage space, along with updated heating/cooling to help keep you more comfortable and reduce window fogging/frosting too. New powered precleaner option improves cabin pressurization to help keep more dirt out.

## ON-BOARD HELP

Key Features button in the display gives you a machine overview, along with helpful operating tips. Learn more about technology and machine features that help you get the most from your dozer.





## POWER TO MOVE DIRT FINESSE FOR BETTER GRADING



### BETTER BALANCE

Stronger, lighter VPAT structure is redesigned to give you better balance for grading. No need for a rear implement or counterweight.



### LOWER GROUND PRESSURE

A new wide-gauge LGP VPAT is purpose-built and equipped with 915 mm (36 in) centered shoes. This adds up to 34 kPa (5 psi) ground pressure to help you take on soft footing.



### BLADE VERSATILITY

Pick a beefed-up push arm bulldozer with plenty of dirt moving power or a purpose-built 6-way VPAT blade to maximize your versatility. Cat VPAT blades give you class-leading range of motion so you can handle challenging jobs like trenching and backfilling. To finish the job, the VPAT blade stays level when angled so you get a smoother grade.



### GRADE FASTER

Grade faster – in the 2.5-3.0 speed range – without sacrificing quality. Wider LGP blade means fewer passes. New finish grading undercarriage option (10-roller) gives you smoother grades, at higher speeds, even in difficult surfaces like sand and gravel.

# CAT LINK TECHNOLOGY

## TAKES THE GUESSWORK OUT OF MANAGING YOUR EQUIPMENT

**Cat Link** telematics technology helps take the complexity out of managing your jobsites by gathering data generated by your equipment, materials and people and serving it up to you in customizable formats.

### **CAT PRODUCT LINK™/VISIONLINK®**

Product Link collects data automatically from your assets – any type and any brand. Access information anytime, anywhere with VisionLink – and use it to make informed decisions that boost productivity, lower costs, simplify maintenance and more. Satellite and/or cellular subscriptions are available.



### **REMOTE SERVICES**

The Cat App helps you manage your assets – at any time – right from your smartphone. See fleet location and hours, get critical required maintenance alerts and even request service from your local Cat dealer.

- + **Remote Flash** – get software updates remotely.
- + **Remote Troubleshoot** – remote diagnostic testing helps pinpoint potential issues, saving time and money.
- + **Operator ID** lets you track machine operation by individual operator using the main display and Product Link.



### **REMOTE CONTROL READY**

When dozers work in hazardous mining and earthmoving applications, the Command for Dozing option helps improve safety and efficiency. Operators control the machine using a line-of-sight console or a remote operator station. Deep integration with machine systems enables smooth, precise control for maximum efficiency and productivity.

With the line-of-sight console, take advantage of the dozer's built-in operator assist features. The remote operator station also allows full use of technology features like Grade with 3D and Slope Assist for even greater productivity.



Please consult your Cat dealer for regional availability.

# LOWER MAINTENANCE COST

LESS MAINTENANCE TIME



---

## SPEND LESS

Fewer filters and service points, along with longer service intervals, save you time and money on routine maintenance. Standard reversing fan extends time between core clean-outs and helps reduce debris for less system wear and tear.

---

## GAIN DURABILITY

Cat C9.3B engine boosts durability with a simplified emissions reduction system and a redesigned fuel system.

---

## GET BACK TO WORK

Grouped service points, modular component design and easy access to routine maintenance points save you time every day. Quick access floor plate option gives you tool-less access for easier belly pan clean out. If needed, the cab can be removed in about 30 minutes, compared to 4 hours on previous models. Standard rear ladder puts fueling, filter changes and rear window cleaning in easy reach. Ground-level access to optional fast fuel fill and maintenance points. Grab rail on both sides of cab roof and tie offs add to your safety.

## REDUCE UNDERCARRIAGE COSTS

Choose the ideal undercarriage to match your jobsite conditions to help save money and maximize service life.

- + Heavy Duty Extended Life undercarriage - HDXL DuraLink™ - offers up to 20% more seal life in high impact conditions.
- + New Cat Abrasion undercarriage for high abrasion, low impact jobsites. New design offers double the seal life and eliminates bushing turns, reducing your costs up to 50% per hour compared to traditional undercarriage.
- + Common structures for Heavy Duty and Cat Abrasion undercarriage enable changes from one to the other.

## EQUIPPED FOR THE JOB

Choose from a variety of factory options for added protection in harsh applications like forestry and pipe line.



# YOUR DOZER, YOUR WAY **BUILD TO SUIT**

Sweeps, door/window screens, debris-resistant cab, heavy duty guarding and more – pick from a variety of options that help protect your operator and your equipment investment. Blade and track shoe choices let you further customize to fit your applications. Factory connections make it easy to fit the machine with a ripper or a dealer-installed winch. Consult with your Cat dealer to learn more about the right options for the work you do.

# FACTORY EQUIPPED TO TAKE ON THE TRASH



## TOUGH ON TRASH

Factory-installed guarding and seals help protect the machine from impact, wrapping and airborne debris. High-debris cab has impact-resistant polycarbonate doors and dual pane windows to eliminate the need for door screens. Powered precleaner is integrated for cleaner cab air.

## COOLING AND CLEANOUT

High-debris cooling system has automatic reversing fan and for easy cleanout. Trash-resistant radiator helps reduce plugging. Thermal shields on the engine and aftertreatment provide added protection in high-debris environments.

## OPTIMIZED FOR PERFORMANCE

Specialized landfill blades include a trash rack for more capacity when working in lighter material. Heavy Duty Extended Life undercarriage has Kevlar-guarded sealed idlers to help protect against seal damage from wrapping. Center-hole track helps eject debris.

# TECHNICAL SPECIFICATIONS

See [cat.com](http://cat.com) for complete specifications.

TECHNICAL SPECIFICATIONS	
<b>Power Train</b>	Fully Automatic Mechanical
<b>Engine</b>	Cat C9.3B
<b>Emissions</b>	U.S. EPA Tier 4 Final, EU Stage V, Korea Tier 4 Final
<b>Build Number</b>	20B
<b>Net Power (2,200 rpm)</b>	
<b>ISO 9249/SAE J1349</b>	161 kW 215 hp
<b>ISO 9249/SAE J1349 (DIN)</b>	219 mhp
<b>Fuel Tank</b>	341 L 90 gal
<b>DEF Tank</b>	28 L 7.4 gal

BLADE	CAPACITY	WIDTH
<b>SU</b>	5.7 m <sup>3</sup>   7.5 yd <sup>3</sup>	3312 mm   10.9 ft
<b>LGP SU</b>	5.8 m <sup>3</sup>   7.6 yd <sup>3</sup>	3613 mm   11.9 ft
<b>LGP S</b>	3.8 m <sup>3</sup>   5.0 yd <sup>3</sup>	4063 mm   13.3 ft
<b>VPAT</b>	4.1 m <sup>3</sup>   5.4 yd <sup>3</sup>	3680 mm   12.1 ft
<b>LGP VPAT (30-in)</b>	4.5 m <sup>3</sup>   5.9 yd <sup>3</sup>	4000 mm   13.1 ft
<b>LGP VPAT (36-in)</b>	4.9 m <sup>3</sup>   6.5 yd <sup>3</sup>	4340 mm   14.2 ft

- Net power advertised is the power available at the engine flywheel when the engine is equipped with a fan, air cleaner, clean emissions module and alternator.
- Net power is tested per ISO 9249:2007 and SAE J1349:2011.
- All nonroad Tier 4 Interim and Final, Stage IIIB, IV and V, and Korea Tier 4 Final diesel engines are required to use only Ultra Low Sulfur Diesel (ULSD) fuels containing 15 ppm EPA/10 ppm EU (mg/kg) sulfur or less. Biodiesel blends up to B20 (20% blend by volume) are acceptable when blended with 15 ppm (mg/kg) sulfur or less ULSD. B20 should meet ASTM D7467 specification (biodiesel blend stock should meet Cat biodiesel spec, ASTM D6751 or EN 14214). Cat DEO-ULS™ or oils that meet the Cat ECF-3, API CJ-4, and ACEA E9 specification are required. Consult your OMM for further machine specific fuel recommendations.
- Diesel Exhaust Fluid (DEF) used in Cat Selective Catalytic Reduction (SCR) systems must meet the requirements outlined in the International Organization for Standardization (ISO) standard 22241.
- The air conditioning system on this machine contains the fluorinated greenhouse gas refrigerant R134a (Global Warming Potential = 1430). The system contains 1.36 kg of refrigerant which has a CO<sub>2</sub> equivalent of 1.946 metric tonnes.

CONFIGURATION	D6	D6 LGP (30-IN)	D6 LGP (36-IN)
<b>Operating Weight<sup>1</sup></b>	22 130 kg (48,788 lb)	22 870 kg (50,420 lb)	23 911 kg (52,715 lb)
<b>Ground Pressure</b>	54 kPa (7.9 psi)	45 kPa (6.5 psi)	36 kPa (5.2 psi)
<b>Machine Height</b>	3.17 m (124.9 in)	3.17 m (124.9 in)	3.22 m (126.9 in)
<b>Length of Machine without Blade</b>	4.73 m (186.2 in)	4.73 m (186.2 in)	5.04 m (198.4 in)
<b>Ground Clearance</b>	361 mm (14.2 in)	361 mm (14.2 in)	395 mm (15.6 in)
<b>Track Gauge</b>	1.93 m (76 in)	2.08 m (82 in)	2.29 m (90 in)
<b>Width over Trunnions</b>	2.69 m (106 in)	2.99 m (118 in)	3.49 m (137.4 in)
<b>Width across End Bits</b>	3.30 m (10.83 ft)	3.61 m (11.84 ft)	4.06 m (13.32 ft)
<b>Width across End Bits, Angled</b>	—	—	—
<b>Width of Standard Track Shoe</b>	610 mm (24 in)	760 mm (30 in)	915 mm (36 in)
<b>Length of Track on Ground</b>	2.96 m (116.7 in)	2.96 m (116.7 in)	3.25 m (127.8 in)
CONFIGURATION	D6 VPAT	D6 LGP (30-IN) VPAT	D6 LGP (36-IN) VPAT
<b>Operating Weight<sup>1</sup></b>	22 275 kg (49,108 lb)	23 012 kg (50,733 lb)	23 547 kg (51,912 lb)
<b>Ground Pressure</b>	49 kPa (7.1 psi)	40 kPa (5.9 psi)	34 kPa (5.0 psi)
<b>Machine Height</b>	3.22 m (126.9 in)	3.22 m (126.9 in)	3.22 m (126.9 in)
<b>Length of Machine without Blade</b>	5.13 m (202.1 in)	5.13 m (202.1 in)	5.13 m (202.1 in)
<b>Ground Clearance</b>	422 mm (16.6 in)	395 mm (15.6 in)	383 mm (15.1 in)
<b>Track Gauge</b>	2.08 m (82 in)	2.29 m (90 in)	2.39 m (94 in)
<b>Width over Trunnions</b>	—	—	—
<b>Width across End Bits</b>	3.68 m (12.07 ft)	4.00 m (13.12 ft)	4.34 m (14.24 ft)
<b>Width across End Bits, Angled</b>	3.36 m (11.02 ft)	3.65 m (11.99 ft)	3.97 m (13.02 ft)
<b>Width of Standard Track Shoe</b>	610 mm (24 in)	760 mm (30 in)	915 mm (36 in)
<b>Length of Track on Ground</b>	3.25 m (127.8 in)	3.36 m (132.1 in)	3.36 m (132.1 in)

<sup>1</sup> With Multi-Shank Ripper (three shanks) add 1696 kg (3,739 lb).

For complete specifications and offerings, please reference the Technical Specifications document at [www.cat.com](http://www.cat.com) or consult your local Cat dealer.

# STANDARD & OPTIONAL EQUIPMENT

Standard and optional equipment may vary. Consult your Cat dealer for details.

POWER TRAIN	STANDARD	OPTIONAL
Fully-automatic 4-speed transmission	•	
Cat C9.3B diesel engine	•	
Double reduction planetary final drives	•	
Hydraulic reversing fan	•	
OPERATOR ENVIRONMENT	STANDARD	OPTIONAL
Fully redesigned cab, sound suppressed, with Integrated Roll Over Protective Structure (IROPS)	•	
Full-color 10-inch (254 mm) liquid crystal touchscreen display	•	
Integrated rearview camera	•	
Adjustable operator controls/armrests	•	
Cab mounted modular HVAC system	•	
Added storage areas	•	
Electrohydraulic implement and steering controls	•	
Cloth seat	•	
Deluxe leather heated/ventilated seat		•
Communication radio ready	•	
Lights – 6 LED	•	
Premium lights – 12 LED		•
Integrated warning lights		•
Powered precleaner		•
CAT TECHNOLOGY	STANDARD	OPTIONAL
Slope Indicate	•	
ARO with Assist - Slope Assist - Traction Control - Stable Blade - Blade Load Monitor - AutoCarry - Third-party Grade Control Ready		•
Cat Grade with 3D - Full-color 10-inch (254 mm) touchscreen grade display - Grade receivers and antennas - Grade Software Enabled Attachment (SEA) - ARO with Assist features		•
Product Link – Cellular	•	
Product Link – Dual Cellular/Satellite		•
Remote Flash/Troubleshoot	•	
Grade Connectivity		•
Operator ID	•	
Machine Security – Passcode	•	
Machine Security – Bluetooth		•
Remote Control Ready	•	
Cat Command for Dozing		•

BLADES	STANDARD	OPTIONAL
Semi-Universal		•
VPAT		•
Straight blade		•
Angle blade		•
Foldable VPAT – under 3 m (9.9 ft) transport width (not available in all regions)		•
Waste/Landfill		•
UNDERCARRIAGE	STANDARD	OPTIONAL
Heavy Duty (HDXL with DuraLink) or Cat Abrasion		•
10-Roller Fine Grading undercarriage		•
SERVICE AND MAINTENANCE	STANDARD	OPTIONAL
Fast fuel fill ready		•
Fast fuel pump		•
Refilling fuel pump (EU only)		•
Rear access ladder	•	
Shovel holder	•	
Ground level service center	•	
30-minute cab removal	•	
High-speed oil change		•
Underhood work light	•	
HYDRAULICS	STANDARD	OPTIONAL
Independent steering and implement pumps	•	
Load sensing hydraulics	•	
ATTACHMENTS	STANDARD	OPTIONAL
Ripper-ready rear hydraulics	•	
Ripper and winch-ready rear hydraulics		•
High lift ripper with straight or curved shanks		•
Winch		•
Drawbar		•
Counterweights		•
Side screens		•
Rear screen – hinged or fixed		•
Sweeps		•
Forestry and Waste Special Arrangements		•

Not all features are available in all regions. Please check with your local Cat dealer for specific offering availability in your area.

For additional information, refer to the Technical Specifications brochure available at [www.cat.com](http://www.cat.com) or your Cat dealer.

For more complete information on Cat products, dealer services and industry solutions, visit us on the web at [www.cat.com](http://www.cat.com).

VisionLink is a trademark of Trimble Navigation Limited, registered in the United States and in other countries.

Materials and specifications are subject to change without notice. Featured machines in photos may include additional equipment. See your Cat dealer for available options.

©2020 Caterpillar. All Rights Reserved. CAT, CATERPILLAR, LET'S DO THE WORK, their respective logos, Product Link, DEO-ULS, Duralink, "Caterpillar Corporate Yellow", the "Power Edge" and Cat "Modern Hex" trade dress as well as corporate and product identity used herein, are trademarks of Caterpillar and may not be used without permission.

[www.cat.com](http://www.cat.com) [www.caterpillar.com](http://www.caterpillar.com)

AEXQ2480-01  
Build Number: 20B  
(Aus-NZ, Europe, N Am,  
S. Korea, Turkey)

